

SMARTER
**Business
Security**



Integrated Systems





Integrated Systems

YOUR HIGH-TECH, LOW-MAINTENANCE FUTURE CUSTOM OFFICE IS HERE

Owning an automated work space should be an easy and simple process, and with Life Safety Integrated Systems it is!

We provide state-of-the-art solutions from the industry's leading manufacturers of IP video, CCTV, access control, fire, intrusion, sound, communications, structured cabling, and automation products.

Review the options inside. When you're ready to talk or have questions, call one of our business technology techs and we'll walk you through it.



TABLE OF CONTENTS

WORKPLACE AUTOMATION	4
SECURITY SYSTEMS	6
SURVEILLANCE	8
SHOOTER DETECTION SYSTEMS	10
FIRE ALARM MONITORING & SYSTEMS	11
ACCESS CONTROL	12
TELEPHONE SYSTEMS	14
NETWORK CONNECTION	15
AUDIO/VIDEO SOLUTIONS	16
CONFERENCE ROOM INTEGRATION	17
LIGHTING CONTROL AUTOMATION	18
KIOSKS	19
DISPLAY MOUNTS	19
FREE BUSINESS PROPOSAL	20





WORKPLACE AUTOMATION

CONTROL ALL OF YOUR SUBSYSTEMS FROM ONE EASY-TO-USE INTERFACE

Mechanical. Security. Fire and flood safety. Lighting. HVAC and humidity control. Ventilation systems.

We can seamlessly connect your equipment and technology to your workspace without putting your business on hold. When you trust Life Safety Integrated Systems to help your project we examine and anticipate all aspects of your project, from construction to completion. This ensures your new office is in place, on time, and within budget. Most importantly, we blend innovation and inventiveness with the mechanical demands of technology that fits your particular business flow.

Life Safety Integrated Systems can help you manage what you want ... when you want it ... where you want it.

Business owners like you love the efficiency and cost-savings we can extend to you through our relationships with the industry's best and brightest in workplace automation.

*Programmed To
Your Company's
Daily Needs.*



ELAN
a Nice brand

legrand
shading systems

ALARM.COM

VANTAGE





SECURITY SYSTEMS

PROTECT YOUR BUSINESS FROM THEFT AND VANDALISM—INSIDE AND OUT

When it comes to on-premise security, Life Safety Integrated Systems has your first and last line of defense. We proudly partner with the leaders in commercial security to protect your business from theft—both outside intrusion and employee theft. Whether it's traditional door locks and door hardware, electronic keyless entry locks, safes that can withstand temperatures of up to 1800 degrees while surviving a 13 foot drop, or alarm systems installed by an Life Safety Integrated Systems certified installation technician—your valuables are protected.

In addition to the hardware and support you'll receive from Life Safety Integrated Systems, you can customize your level of security with access control and 24/7 video surveillance. These features ensure you know who enters and leaves your building, day or night, employee or otherwise.

Life Safety Integrated Systems not only helps you protect your people and your property, we can install an industry-leading intrusion detection system that is professionally built on an open platform—allowing for easy integration with all of your other systems.



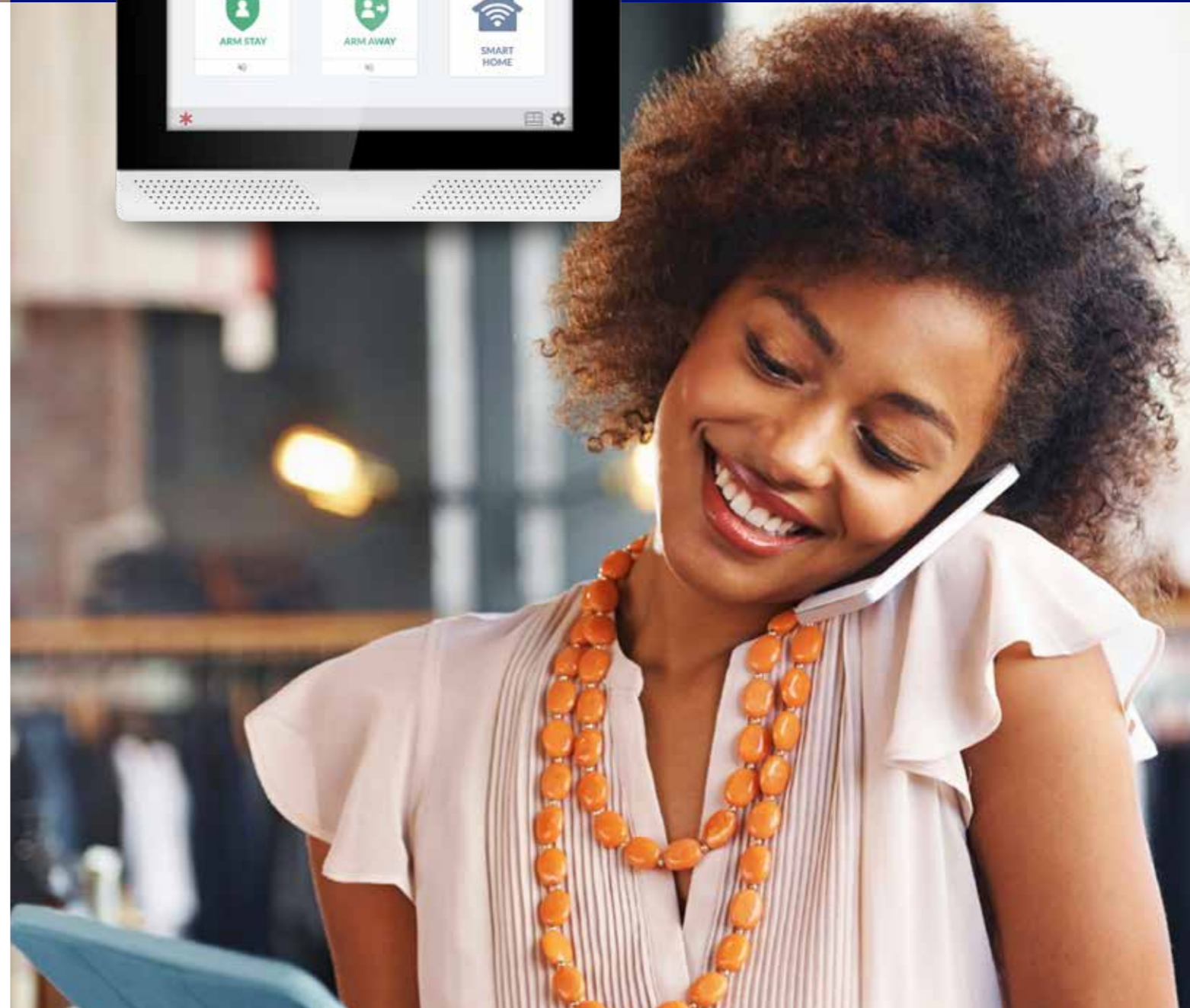
DSC

alula

2GIG
a Nice brand



KEEP AN EYE FROM ANYWHERE



See all the important activity at your business, even when you're on the go. With single and multi-camera viewing, live-streaming, recorded video and real-time notifications, it's easy to see what's happening when you can't be there.



SURVEILLANCE

A LOOK FROM ANYWHERE

Protect your employees, customers, and property with HIGH QUALITY VIDEO SURVEILLANCE

From indoor and outdoor camera options, dome and bullet cameras, and IR cameras, to night vision, long range cameras, vandal proof cameras, license plate recognition cameras, and more—Life Safety Integrated Systems’s rugged commercial grade surveillance equipment combines high definition video with weather-tested strength.

Consistency is key to quality surveillance. Our cameras—whether you need one stand-alone camera to watch over a safe or a multi-camera system that covers a wide area inside and outside your business—offer clear, high image resolution in even extreme lighting.

HD resolution. Seamless recording. Peace of mind.

A friendly smile
A watchful eye



REVIEW YOUR SURVEILLANCE FOOTAGE RIGHT FROM YOUR PHONE.

Mobile apps allow you to view, playback and capture still images from a surveillance system on your smart phone and tablet. Stay aware of important activity at your property anytime, not just when there’s an emergency, with customizable text, push notifications and email alerts.



GUN SHOT DETECTION SYSTEMS

RELIABLE DETECTION, IMMEDIATE NOTIFICATION IN CASE OF GUN FIRE

The Guardian Indoor Active Shooter Detection System simultaneously detects gunfire and immediately relays this information via floor plan map with shot location, text, e-mail, and other notification pathways to key personnel and building occupants, with no human interpretation required.

It does not require additional software, hardware, cloud servers, or human interaction to determine if a gun has truly been fired. It will work seamlessly with your current VMS, CCTV and Alarm Systems without an ongoing cost.



FIRE ALARM MONITORING

ALERTING YOU AND THE FIRE DEPARTMENT AT THE FIRST SIGNS OF FIRE

If a fire alarm or smoke sensor in your business is triggered, day or night, Life Safety Integrated Systems will respond immediately. Rest assured, our 24/7 monitoring never sleeps. We contact and dispatch emergency response services at the first warning sign that your business is in danger.

Because our state-of-the-art smoke and heat detectors enable our trained professionals to notify the fire department of a possible fire at your business, whether you're there or not, you are always protected.

FIRE ALARMS

Life Safety Integrated Systems provides dependable solutions for the biggest safety threats to business. Hard-wired fire safety options include smoke detectors, heat sensors, and carbon monoxide alarms. Wireless systems include heat detectors and carbon monoxide alarms. Plus all the accessories you need to help protect your business against a catastrophic fire or carbon monoxide leak.

Ultimately, we keep your building and your people safe while meeting all state safety mandates. With an extensive line of products that consistently delivers effective sensing and detection—You're covered by reliable protection at a reasonable price.



WAS A GUN FIRED?

The Sentinel determines a gunshot in less than 500 ms and reports it to your Security System, Alarm System, VMS and/or Alarm Panel



WHERE'S THE SHOOTER?

- 360° detection (17,000 sq. feet)
- 8 sensors determine exact location of shooter
- pan/tilt/zoom cameras can be programmed to respond and get footage



NO ONGOING COSTS

- Low-cost, high-precision detection solution
- No software, hardware, or cloud servers required
- No subscription fees



Safety is our priority

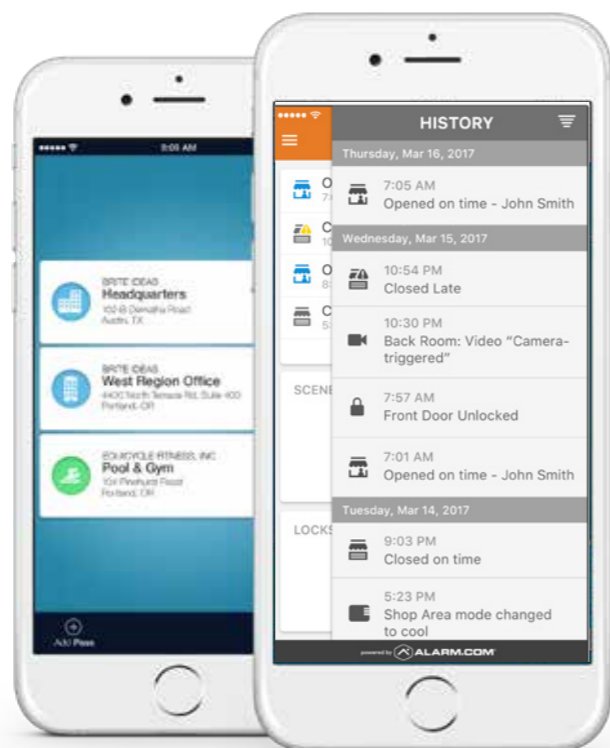


ACCESS CONTROL

THE BEST LEVEL OF PROTECTION FOR YOUR BUSINESS

Authorization, authentication, access approval, and accountability of all the people who come and go in your business throughout the day is of critical importance, to say the least. But it is no small job to properly and securely manage all the login credentials, passwords, personal identification numbers (PINs), biometric scans, and physical or electronic keys that will access your premises and information-sensitive systems each day.

That is precisely why Life Safety Integrated Systems offers single source engineered solutions for all your security, audio/video, and electronic integration needs. These full-featured access control systems go beyond locking and unlocking doors—although they do that too. They can track, record, and deter access throughout your building. Restrict access to sensitive areas. Specify what a person can do on a given system. Ensure that only authorized people can log on to your system. And identify what a person did on the system they accessed.



*Open Doors
With Your
Smartphone*



Do not leave your business or information systems vulnerable to attack. And do not settle for a one-size-fits-all approach. Life Safety Integrated Systems utilizes state-of-the-art access control technologies that integrate with your unique workflow to give you not only the best level of protection in the business, but the best level of protection for *your* business.

brivo
simply better security

dormakaba

nascom



COMMUNICATION SYSTEMS

ENHANCED COMMUNICATION SOLUTIONS

Life Safety Integrated Systems provides Intelligent, Versatile and Affordable Communication Solutions for Small Businesses.

As a small business, you thrive by providing hands-on, personalized service to your clients. You simply can't afford to be out of touch, either with customers or colleagues. While the elaborate communications infrastructure of a larger enterprise may be beyond your means, Life Safety Integrated Systems has an intelligent, versatile and affordable way to bring anytime, anywhere communication to your business.



*Communications
Uninterrupted*

WyreStorm



NETWORK CONNECTION

GET CONNECTED, STAY CONNECTED WITH A STUNNING CHOICE OF SOLUTIONS

Life Safety Integrated Systems has been leading the way in low-voltage wire innovations since **2003**. Our systems are installed faster with less labor, and we pass those cost savings on to you.

Because we have 100% quality control over our products, this allows Life Safety Integrated Systems the ability to quickly and easily create custom cables based on your specific projects.

We don't try to predict how technology will change, we plan on it. By bringing together each subsystem into one fully automated system, while accommodating for upgrades, Life Safety Integrated Systems structured wiring packages do not need to be extracted and reinstalled with each new cabling innovation.



Powering the Smart Business



AUDIO/VIDEO

UNIQUE SOUNDS AND MEMORABLE IMAGES

What do you get when you combine the most recognized audio and video brands in the business with competitive pricing and unsurpassed customer service? You get world class sound and video that was almost unheard of just five years ago.

But ground breaking audio and video needs to do even more than just look and sound amazing—it needs to function seamlessly within your unique work environment.

Need it completely hidden, with no wires or cables anywhere in sight? We can do that. Need it integrated into your current AV footprint? We can do that. Need it customized to fit your specific day to day demands? We can definitely do that.

For a complete suite of satellite and custom AV installation products, including audio speakers, multi-channel amplifiers, and multi-room audio control products, your company can't do better than Life Safety Integrated Systems.

CONFERENCE ROOM



MAKE THE MEETING ROOM IN YOUR BUILDING THE SMARTEST ROOM IN YOUR BUILDING

Cutting edge audio and crystal clear video. Lights and lightning fast wireless. Climate control and cameras. Shades and scheduling systems. Service and support.

Life Safety Integrated Systems understands that your company's conference room is more than just a meeting space for your employees. It is often the first impression of your business in the minds of your board members, shareholders, and potential clients.

An integrated conference room—one that allows each person to connect, compare, and share content wirelessly; a space with lighting and audio and video solutions that can be tailored to each presentation; a unified place that is as flexible to your specific needs and workflow as it is comfortable to the people you're hosting—is the smartest way to do business.

ELAN
a Nice brand

Klipsch



LUXUL

ethereal





KIOSKS

Designed specifically for the commercial market, these kiosks are available with high luminance LED panels, vivid color adjustment technology, your choice of built-in media player, and optional touchscreen displays. Simple installation and maintenance make these kiosks a perfect all-in-one solution for digital marketing anywhere.



LIGHTING CONTROL

Don't just set the mood, set a new benchmark. Control an individual light or your entire building full of lights from a single interface. Enhance your video presentations by controlling the light settings with a touch of a button from your laptop, tablet, or smartphone. Create complex lighting scenes without the need for an electrician or IT technician.

Now, combine these lighting options with automated window shades and you have the most beautiful, cost-effective way to harness daylight and reduce your energy consumption.

By tapping into the myriad of lighting control automation options, you can stop paying unnecessary costs for overly-lit or unoccupied spaces in your building. You also control where your lights, switches, sensors, and shades are placed.



DISPLAY MOUNTS

Wall and ceiling mounts provide unlimited solutions for the video needs of your business. With wall mounts you can offer perfect display positioning and flexible adjustments that aligns the screens quickly even on irregular mounting surfaces. Or construct menu boards or video walls in prominent locations where walls aren't available with ceiling mounts.



Integrated Systems

Isisinc.com

FREE BUSINESS PROPOSAL

Take control of your workplace. When Life Safety Integrated Systems syncs all of your workplace electronics together for the ultimate customer and employee experience.

We will visit your location for FREE, analyze your day-to-day work needs and find ways to automate a better place to work and conduct daily business.

What's the word on the street about Life Safety Integrated Systems?

Life Safety Integrated Systems provides the Western NY business area's most custom fit solutions for enhanced safety, energy efficiency and audio/video entertaining equipment and techs. At Life Safety Integrated Systems, our goal is simple – we aim to customize your business with the highest-quality automation technology at the best value – period.

SERVICE & WARRANTY

As technology continues to progress rapidly and becomes more complicated with each innovation, we help simplify your life. Need help?

Call: 833-246-2727

Life Safety Integrated Systems

2133 Broadway
Sloan, NY 14212
Isisinc.com/contact-us

Follow Us



BRANDS



alula

ELAN
a Nice brand



Klipsch



DSC

CHIEF

HunterDouglas



WyreStorm

Pioneer
ELITE



LINEAR
a Nice brand

xantech
a Nice brand



LUXUL

SANUS



VANTAGE

DA-LITE



ethereal

ACTIVE
GUARDIAN

TRENDNET

nascom

ALARM.COM



ZUUM

dormakaba



Honeywell
Generators

inner range

Northern*

